

GUMVERN GM

Decorative and protective pigmented elastomeric liquid sheath

Description: Coloured waterproofing liquid membrane formulated based on selected synthetic resins in water dispersion and special additives.

Advantages:

- Reduces concrete carbonation phenomena.
- Long-lasting waterproofing resistant to weathering and UV rays.
- Cold laying, without fire risk and directly on the old bituminous sheaths without having to remove them.
- Perfect adherence, suitable for complex construction details and resistant to micro-cracking.
- Low maintenance, does not require additional protection.
- Resistant to standing water on the surface even in the absence of a slope.
- Also suitable for surfaces in industrial areas or near the sea.
- Odourless, non-flammable product.
- Non-toxic product, free from solvents.

Applications: To cover and waterproof:

- Flat roofs, balconies, terraces, bathrooms, showers, saunas, old bituminous surfaces, tiles, sheet metal roofs and retaining walls.
- Concrete balconies, before gluing the stoneware or clinker tiles where the solution with polymer-bitumen membranes is not feasible.
- Create a waterproofing and bonding base for the subsequent bonding of tiles with the appropriate cement-based adhesives (category C according to EN 12004).
- Fibre-cement, wood, polycarbonate, and metallic surfaces.
- Encapsulating coating for the remediation of asbestos cement products.

Surface preparation:

- Make sure that the surface is free from detached parts, loose debris or non-adherent parts, coatings, rust, powder, or release oils. Carefully clean the surfaces, which must be solid, even, and dry and in the case of concrete surfaces must not have been previously treated with evaporation retardant products.
- Surfaces with irregularities, plaster and castings that are too rough, holes, gravel patches, cracks, etc. need to be repaired and/or smoothed.
- Before applying, it is advisable to check the solidity and efficiency of the water run-off points of the surface to be waterproofed.
- On non-visible lightened or waterproofed screeds (under screed, underfloor, etc.) check the internal humidity and whether or not it is necessary to lay vapour vents.
- The waterproofing must be protected from rain, dew, and fog until completely dry. Humidity and low temperatures lengthen drying time.

Application:

- Apply Gumvern GM by brush, broom, roller or spray.
- Mix well before use.
- As a first coat, apply Gumvern GM diluted up to 25% with water.
- The second coat has to be applied as is or with a lower dilution on the film of the dry first coat.
- Gumvern GM can be reinforced between one coat and the other with fibreglass or polyester non-woven fabric, thus enhancing the mechanical properties of the new waterproofing.
- Apply Gumvern GM on new roofs with membranes without a mineral finish only after a coat of Elastigum ST diluted at 10% or Primer Adefix as is.

GUMVERN GM

Decorative and protective pigmented elastomeric liquid sheath

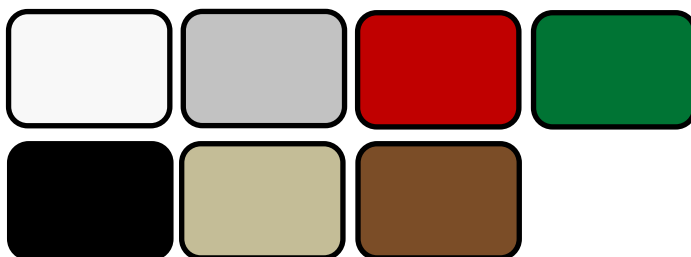
- On polymer-bitumen membranes placed on insulating packages, the product must be applied with non-woven fabric reinforcement.
- After use, wash tools with water and, if the product has dried, it is advisable to remove it with hot water or with the common synthetic thinners.

Consumption: The application must include at least two coats to give a uniform colour to the waterproofing layer, using a total of 1.0-1.5 kg/m² of Gumvern GM depending on the nature and degree of porosity of the surface and the desired thickness. In the case of reinforcement, the increase in consumption depends on its nature and thickness.

- Warnings:**
- Apply the product at ambient temperatures between +5 °C and +35 °C and when there are no weather conditions such as fog, rain, or frost, and in any case avoid extreme situations of cold and heat, even during drying.
 - We advise against applying the product on newly applied bituminous surfaces, which could still release hydrocarbons and cause adhesion problems of the film on the sheath.
 - We recommend applying the product on old polymer-bitumen membranes after applying a base coat of Primersint G2 Natural.
 - Check (according to UNI 10329) that the residual humidity content of the cement surface to be treated is $\leq 5\%$ by weight (for screeds with a density of 2000 kg/m³).
 - We recommend applying the product on surfaces not subject to standing water.
 - If the roof includes insulating packages, a shorter restore is advisable.
 - It can be stepped on in case of occasional maintenance.
 - When applying on polymer-bitumen membranes or bituminous surfaces, check in advance the adhesion of Gumvern GM before applying.
 - Protect from frost, do not expose the package to temperatures below +5 °C; once frozen, the product can no longer be recovered.
 - For further information, request the safety data sheet.

Packaging: 1, 5, 10, 20 and 25 kg metal or plastic pails.
200 kg metal drums.

Available colours:



NB: other colours are available on request for minimum production quantities (contact the sales office).

GUMVERN GM

Decorative and protective pigmented elastomeric liquid sheath

Technical data:

MAIN CHARACTERISTICS		
Appearance		Fluid thixotropic paste
Colours		White, Grey, Red, Green, Black, Off-White, Dark brown
Shelf life in closed original packaging		24 months
Solid content (<i>m/m at 130 °C</i>)	EN ISO 3251	White (62-68)%
		Grey (62-68)%
		Red (62-68)%
		Green (60-66)%
		Black (62-68)%
		Off-White (62-68)%
		Dark brown (60-66)%
Brookfield viscosity (<i>at 20 °C, spindle 5; 10 rpm</i>)	EN ISO 3219	(24,000±4,000)cP
Density (<i>at 20 °C</i>)	EN ISO 2811-1	White (1.41-1.49) kg/L
		Grey (1.41-1.49) kg/L
		Red (1.45-1.55) kg/L
		Green (1.34-1.42) kg/L
		Black (1.30-1.38) kg/L
		Off-White (1.41-1.49) kg/L
		Dark brown (1.38-1.46)kg/L
Dust-free time		4 hours*
Complete drying time		48 hours*

PERFORMANCE PROPERTIES - EN 14891 – LIQUID APPLIED WATER IMPERMEABLE PRODUCTS FOR USE BENEATH CERAMIC TILING BONDED WITH ADHESIVES -		
PERFORMANCE PROPERTIES	EN 14891 REQUIREMENTS	PRODUCT PERFORMANCE
Initial Tensile Adhesion Strength	> 0.5 N/mm ²	> 0.5 N/mm ²
Tensile adhesion strength after water contact	> 0.5 N/mm ²	> 0.5 N/mm ²
Tensile adhesion strength after heat ageing	> 0.5 N/mm ²	> 0.5 N/mm ²
Tensile adhesion strength after freeze-thaw cycle	> 0.5 N/mm ²	> 0.5 N/mm ²
Tensile adhesion strength after contact with chlorinated water	> 0.5 N/mm ²	> 0.5 N/mm ²
Water impermeability	No penetration	Impermeable
Crack Bridging Ability (at -5 °C)	> 0.75 mm	> 0.75 mm
CLASSIFICATION ACCORDING TO UNI EN 14891	CLASS DM O1	Impermeable product applied in liquid dispersion with improved crack bridging ability at low temperatures (-5 °C)

GUMVERN GM

Decorative and protective pigmented elastomeric liquid sheath

**PERFORMANCE PROPERTIES - EN 1504-2
SURFACE PROTECTION SYSTEMS FOR CONCRETE
(C COATINGS – PRINCIPLES: PI-MC-IR)**

Permeability to CO ₂	EN 1062-6	S _D > 50 m
Water vapour permeability	EN ISO 7783	Class I (S _D < 5 m)
Liquid water permeability	EN 1062-3	w < 0.1 kg/m ² ·h ^{0.5}
Tensile bond strength	EN 1542	≥ 1 N/mm ²
Reaction to fire	EN 13501-1	E

* Measurements have been recorded at a temperature of 23 °C and with 50% moisture. Declared data may vary depending on the thickness of the applied product and on the specific conditions of the construction site: temperature, humidity, ventilation, and absorbency of surfaces.

**APPROVAL OF ENCAPSULANTS FOR REMEDIATION OF ASBESTOS CONCRETE STRUCTURES
(MINISTERIAL DECREE 20/08/1999 according to UNI 10686/98)**

TYPE OF ENCAPSULATING COATINGS	PRODUCT APPLICATION PROCEDURE
(A) IN FULL VIEW FROM THE OUTSIDE <i>- water-based cycle -</i>	<ul style="list-style-type: none"> After cleaning the surfaces, apply a coat of red Fiber-Fix with variable consumption between 200 and 300 g/m². Once dried, after about 60 minutes apply 400 to 500 g/m² for the first layer of Gumvern GM. After complete drying, apply the second coat of Gumvern GM, with a colour that contrasts with the previous coat, with a consumption of 400 - 500 g/m².
(B) IN FULL VIEW FROM THE INSIDE (C) CONCEALED <i>- in support of confinement works -</i>	<ul style="list-style-type: none"> after cleaning the surfaces, apply a coat of Gumvern GM diluted with water in a ratio of 1:1 in a quantity between 200 and 300 g/m². Once dried, after about 4 hours apply 400 to 500 g/m² for the first layer of Gumvern GM. After complete drying, apply the second coat of Gumvern, with a colour that contrasts with the previous coat, with a consumption of 400-500 g/m².
(D) AUXILIARY <i>- temporary encapsulation for removal -</i>	<ul style="list-style-type: none"> after cleaning the surfaces, apply a coat of Gumvern GM diluted 35% with water in a quantity of about 250 g/m².



The advice and technical information provided represent HA ITALIA S.p.A.'s best knowledge of product properties and use. Considering the different situations of use of the products and factors beyond our control (media, working conditions, failure to comply with instructions), we cannot be held responsible for the results obtained. Before using the product, anyone who intends to make use of it is required to determine whether it is suitable for the intended use and assumes full liability for whatever may arise from its use.

HA Italia disclaims any and all liability arising from failure to observe the warnings mentioned in this data sheet and failure to comply with the requirements set out in the safety data sheet.

Data sheet no.: REV01 dated 01.01.2024




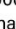
HA ITALIA S.p.A.

DIVISIONE PRODOTTI SPECIALI

Viale della Scienza 78 -80 - 36100 Vicenza - Italy

Stabilimento Via Vicenza 72 - 36015 Schio (VI)

P.I. e C.F. IT00169590247 - Ph +39 0445 678000

info@ha-italia.com - www.ha-italia.com -  ha italia s.p.a -  ha italia s.p.a

